

EASTBOURNE

PROFESSIONAL SUITES

Beautifully renovated serviced consulting rooms are available sessional, part-time or full-time with a large independent group of practitioners.

Located at a prestigious East Melbourne address, Eastbourne offers a collegial environment and is refurbished with high quality fittings. All offices are sound-proofed, are air-conditioned and have natural light with CBD or garden views.

Large, medium and small rooms are available.

Eastbourne is located close to public transport - it is only 100m to Jolimont station and Trams 75 and 48 are at our front door.

Walking distance to the CBD and the MCG.

Local parking is available and great cafes are just a few doors away.

Rates:

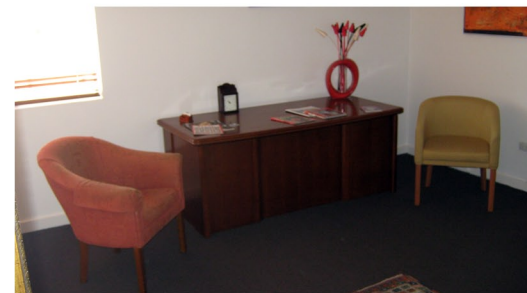
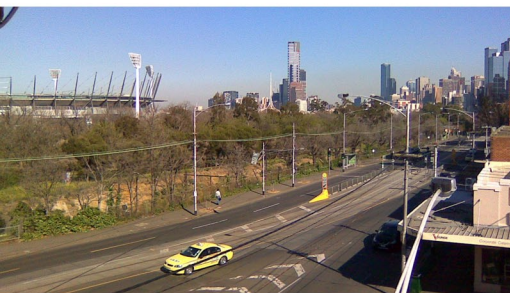
From \$100 per day fully furnished

From \$380 per week unfurnished

From \$420 per week fully furnished

- inclusive of all outgoing: GST is in addition to these rates

Discount weekend rates available



62 WELLINGTON PARADE, EAST MELBOURNE (CORNER SIMPSON STREET)

Contact: 0433 321 123

info@eastbourne.com.au

www.eastbourne.com.au